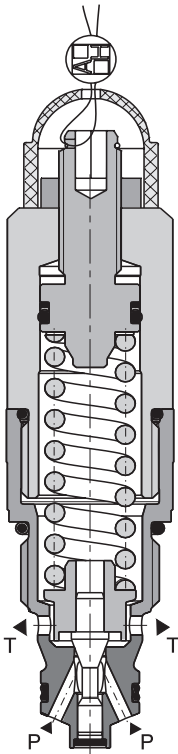
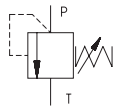


Directly Operated Pressure Relief Valve

SR1A-B2/HxSx-CE1017

7/8-14 UNF • Q_{max} 60 l/min (16 GPM) • p_{max} 420 bar (6100 PSI)

Model S



Technical Features

- › The valve has been certified according to PED Directive 97/23/EU by TÜV SÜD Czech s.r.o. (notified body No. 1017)
- › The CE marked valve is supplied with "Declaration of Conformity" and "Operating Instructions" with the list of residual risks
- › Wide range of pressure settings – 7 pressure stages
- › Hardened cone and precision working parts
- › Leakfree in closed position
- › Rapid response to pressure changes
- › Flat pressure characteristic over whole flow range
- › In standard configuration the valve body and adjusting screw are zinc coated and the seat carbonitrided

Functional Description

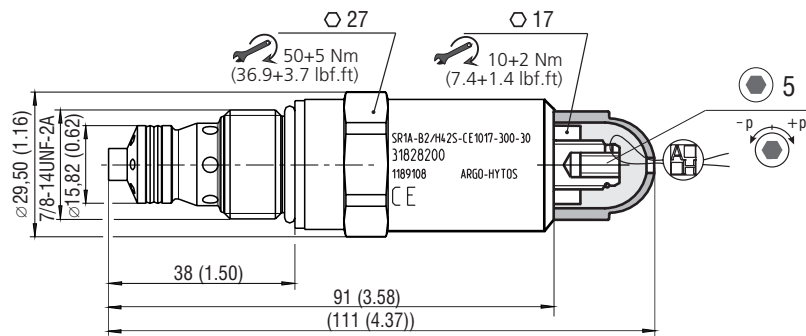
A screw-in, cartridge-style, direct-acting, poppet-type, hydraulic relief valve intended for use as a pressure limiting device for common hydraulic circuit protection.

Technical Data

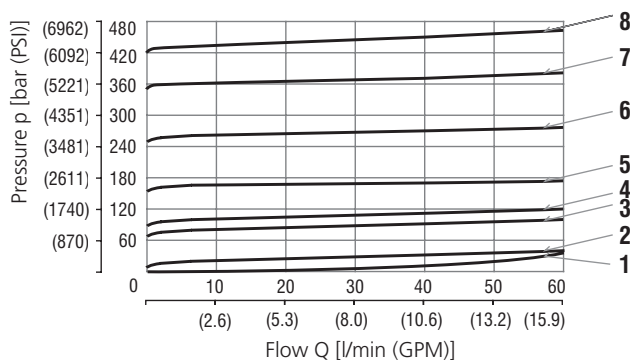
Valve size / Cartridge cavity		7/8-14 UNF-2A / B2
Max. flow	l/min (GPM)	60 (15.90)
Max. inlet pressure (port P)	bar (PSI)	420 (6090)
Max. pressure (port T)	bar (PSI)	250 (3630)
Pressure drop	bar (PSI)	see Δp -Q characteristics
Fluid temperature range (NBR)	°C (°F)	-30 ... +100 (-22 ... 212)
Fluid temperature range (Viton)	°C (°F)	-20 ... +120 (-4 ... 248)
Max. leakage of closed valve at the input pressure set on 80% of cracking pressure	cm ³ /min	0,1
Weight	kg (lbs)	0,27 (0.60)
Viscosity range	mm ² /s (SUS)	10 ... 500 (49 ... 2450)

Accessories	Data Sheet	Type
Bodies for valves	In line mounted	SB_0018
	Sandwich mounted	SB-04(06)_0028
Cavity details / Form tools	SMT_0019	SMT-B2*
Spare parts	SP_8010	

Dimensions in millimeters (inches)



Characteristics measured at $v = 32 \text{ mm}^2/\text{s}$ (156 SUS)



Item	Pressure range
8	42
7	35
6	25
5	16
4	10
3	6
2	2
1	Min. pressure setting

Valves adjusted at the manufacturer

- › The valves are adjusted for the specified pressure at the relevant flow rate and they are fitted with tamper-indicating seals.
- › The pressure and flow rate values are indicated in the valve description on the product [pressure: in bar, flow rate in l/min].
- › The seals bear the company logo.

Not preset Valves at the manufacturer

- › These valves have no tamper-indicating seals.
- › No adjusted pressure and flow rate are indicated for not preset valves - SR1A-B2/HxSx-CE1017.
- › After the completion of the functional test, the adjusting screw is completely loosened and the pressure is set to p = 0 bar.
- › For the adjustment of the valve required pressure, proceed as follows:
 - by turning the adjusting screw to the right, the pressure is increasing;
 - by turning to the left, the pressure is decreasing.
- › The manufacturer accepts no responsibility for the adjustment, securing and sealing the valve.

Residual risks

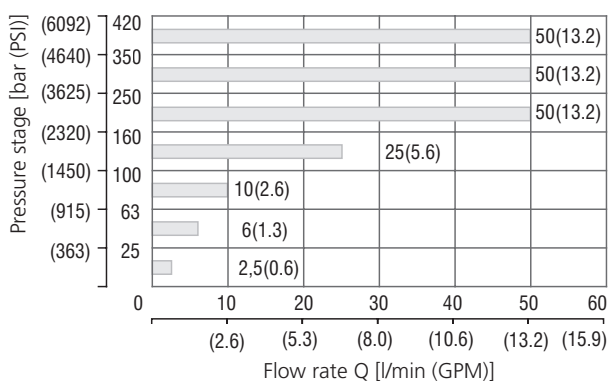
Residual risks are listed and preventive measures against the occurrence of residual risk are described in the document „Operating instructions for pressure relief valve SR1A-B2/HxSx-CE1017“ which is delivered with each valve.

Application area

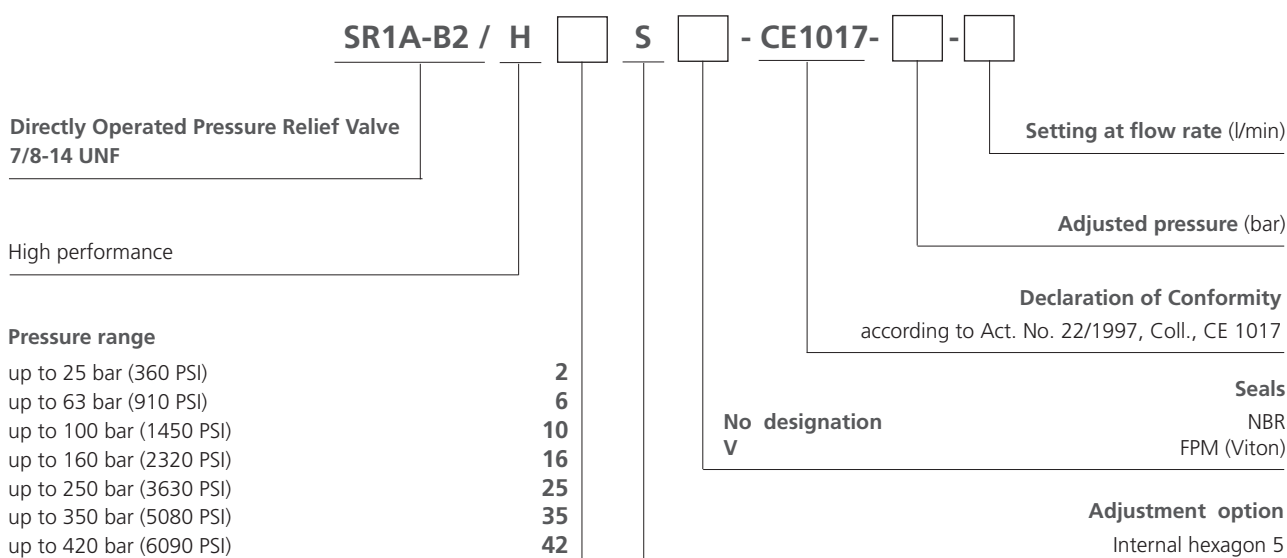
The diagram shows the area of the valve application meets the requirement of Directive 97/23/EU and Standard ISO 4126-1 on maximal short-time overshooting of system pressure 10% above the set cracking pressure when the valve opens.

The dynamics of the valves depends on the kinematic viscosity of working fluid.

Measurement conditions: oil Renolin VG 32, T = 40 °C (104° F) , V = 0,5 l (0.132 gallon US)



Ordering Code



If not preset valves are ordered, pressure and flow rate information is not shown.