

- For in-line mounting of hydraulic valves
- Parallel connection of ports P and T
- 1 ... 6 sections possible
- Installation dimensions size 10 to ISO 4401 and DIN 24 340-A10



Ordering Code

PD10 - **AL**

In-line connecting plate

Nominal size

Connection
see functional symbol

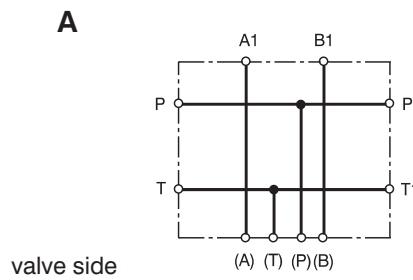
A

Material - aluminium

Number of sections

1	1 section
2	2 sections
3	3 sections
4	4 sections
5	5 sections
6	6 sections

Functional Symbol



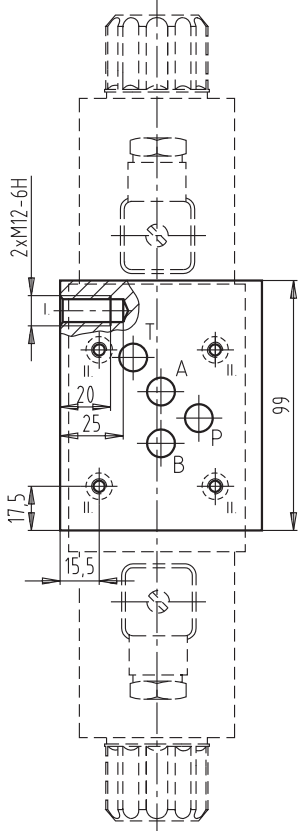
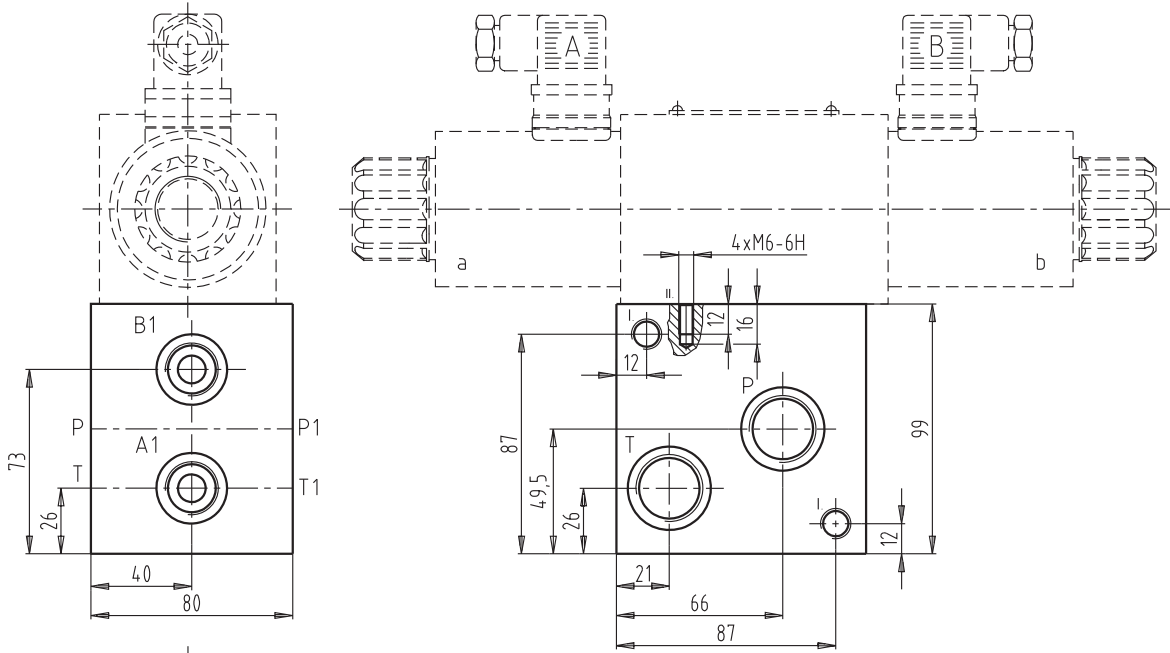
Survey of types

Type	Ordering number	Weight lbs (kg)
PD10A1-AL	16108400	2.32
PD10A2-AL	16108500	4.48
PD10A3-AL	16108600	6.62
PD10A4-AL	16108700	8.85
PD10A5-AL	16108800	11.03
PD10A6-AL	16108900	13.21

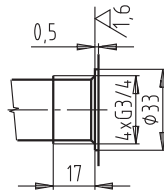
Plate Dimensions

Dimensions in millimetres

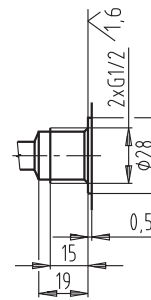
Plates with 1 section



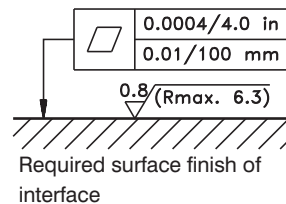
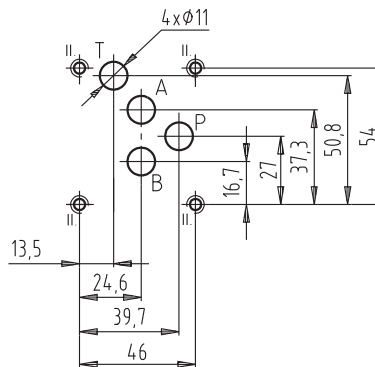
P, T, P1, T1



A, B



Installation dimensions

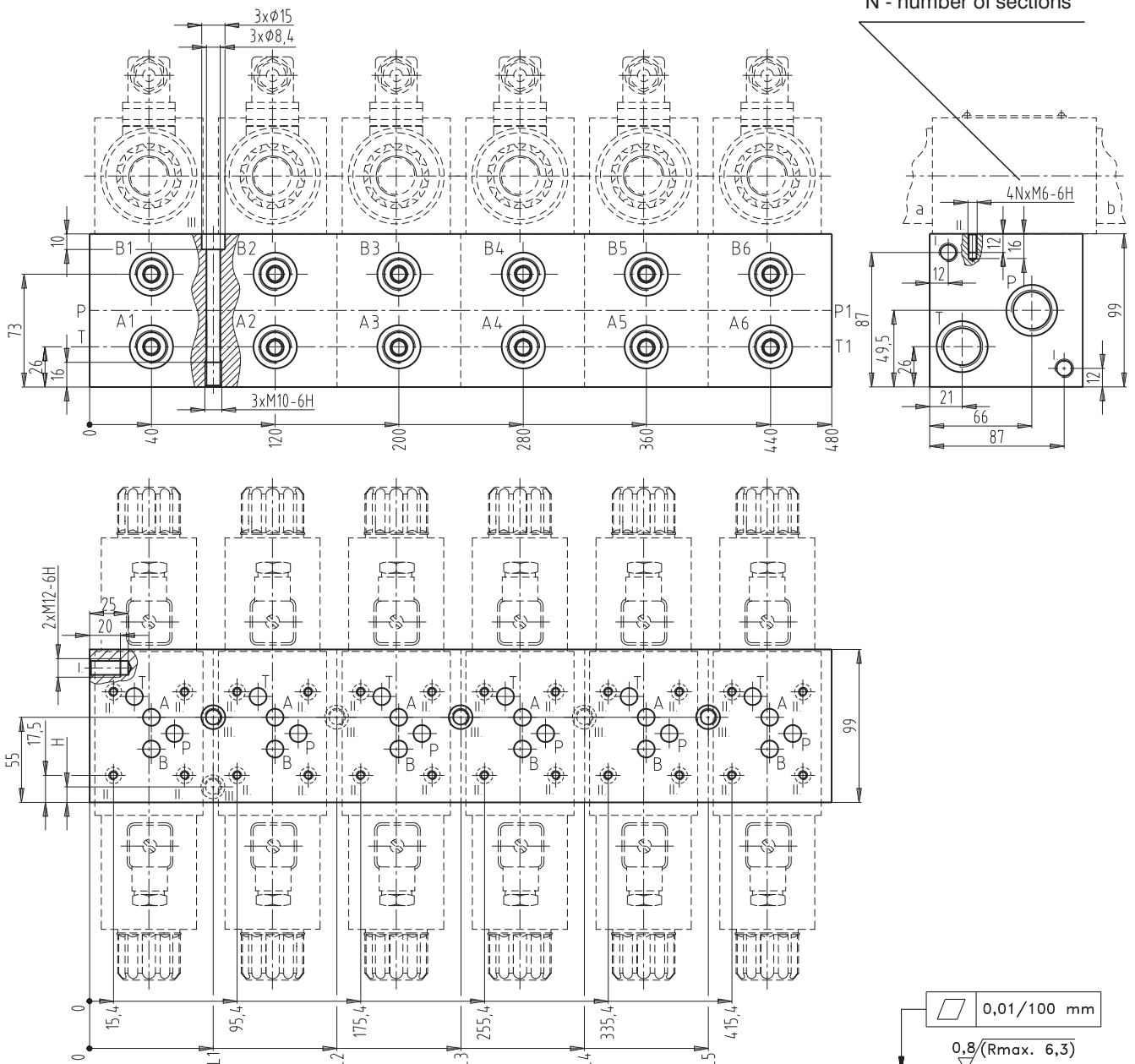


Port	A, B	P, T, P1, T1
Thread	G1/2	G3/4
Depth of thread	15	17
Counterbore	Ø28	Ø33
Depth of counterbore	0.5	0.5

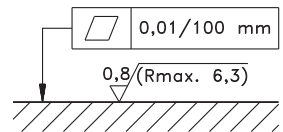
Plate Dimensions

Dimensions in millimetres

Plates with 2 ... 6 sections



N - number of sections



Required surface finish of interface

Number of sections	L1	L2	L3	L4	L5	H
2	80	-	-	-	-	10
3	80	160	-	-	-	-
4	80	-	240	-	-	-
5	80	-	240	320	-	-
6	80	-	240	-	400	-
Port	A1...A6, B1...B6				P, T, P1, T1	
Thread	G1/2				G3/4	
Depth of thread	15				17	
Counterbore	Ø28				Ø33	
Depth of counterbore	0.5				0.5	

Caution!

- The packing foil is recyclable.
- The technical information regarding the product presented in this catalogue is for descriptive purposes only. It should not be construed in any case as a guaranteed representation of the product properties in the sense of the law.

ARGO-HYTOS s.r.o. CZ - 543 15 Vrchlabí
Tel.: +420-499-403 111
E-mail: info.cz@argo-hytos.com
www.argo-hytos.com