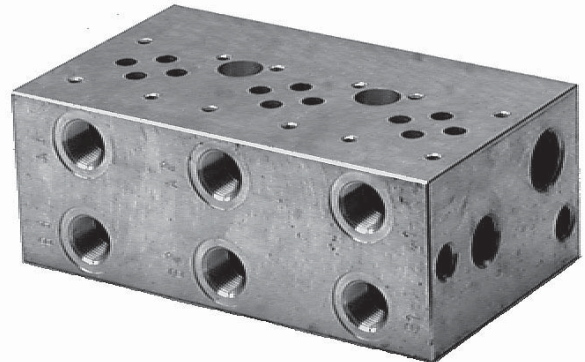


- For in-line mounting of hydraulic valves
- Parallel connection of ports P and T
- 1 ... 10 sections possible
- Installation dimensions to ISO 4401-03-02-0-94 and DIN 24 340-A6
- Mounting Accessories



Ordering Code

PD06 -AL

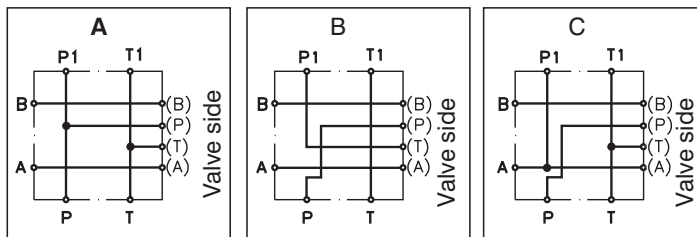
In-line connecting platte

Nominal size

Material - aluminium

Connection

Functional symbols



1
2
3
4
5
6

Number of section

1 section
2 sections
3 sections
4 sections
5 sections
6 sections

Survey of Types

Type	Ordering number	Weight
PD06A1-AL	16102300	0,713 kg
PD06B1-AL	16102900	0,714 kg
PD06C1-AL	16103000	0,711 kg
PD06A2-AL	16102400	1,410 kg
PD06A3-AL	16102500	2,110 kg
PD06A4-AL	16102600	2,820 kg
PD06A5-AL	16102700	3,525 kg
PD06A6-AL	16102800	4,230 kg

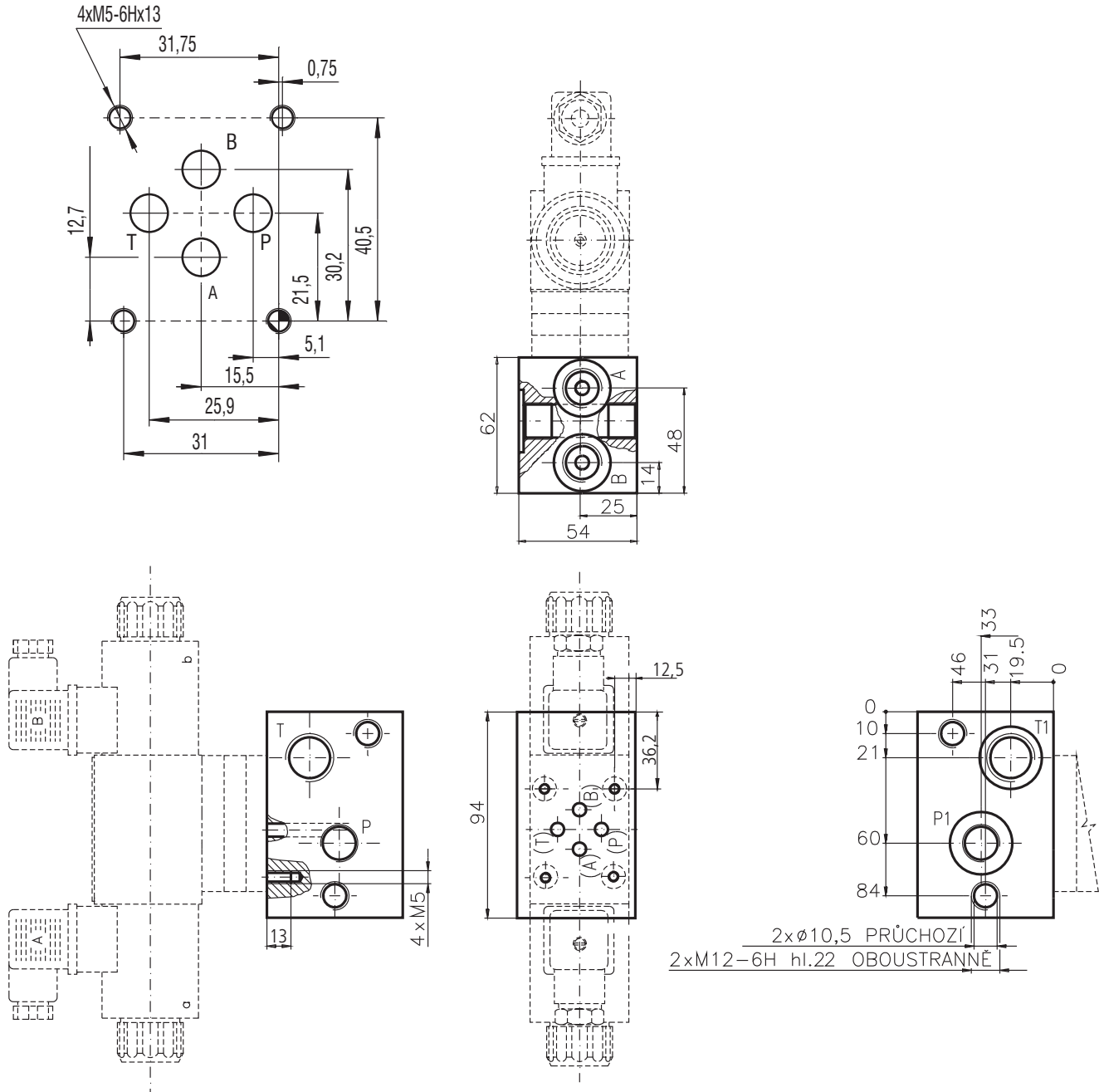
Valve Dimensions

Dimensions in inches and millimeters (in brackets)

Plates with 1 section

Plates with 1, 2, 3 and 4 sections enable combinations up to 10 sections

Installation dimensions



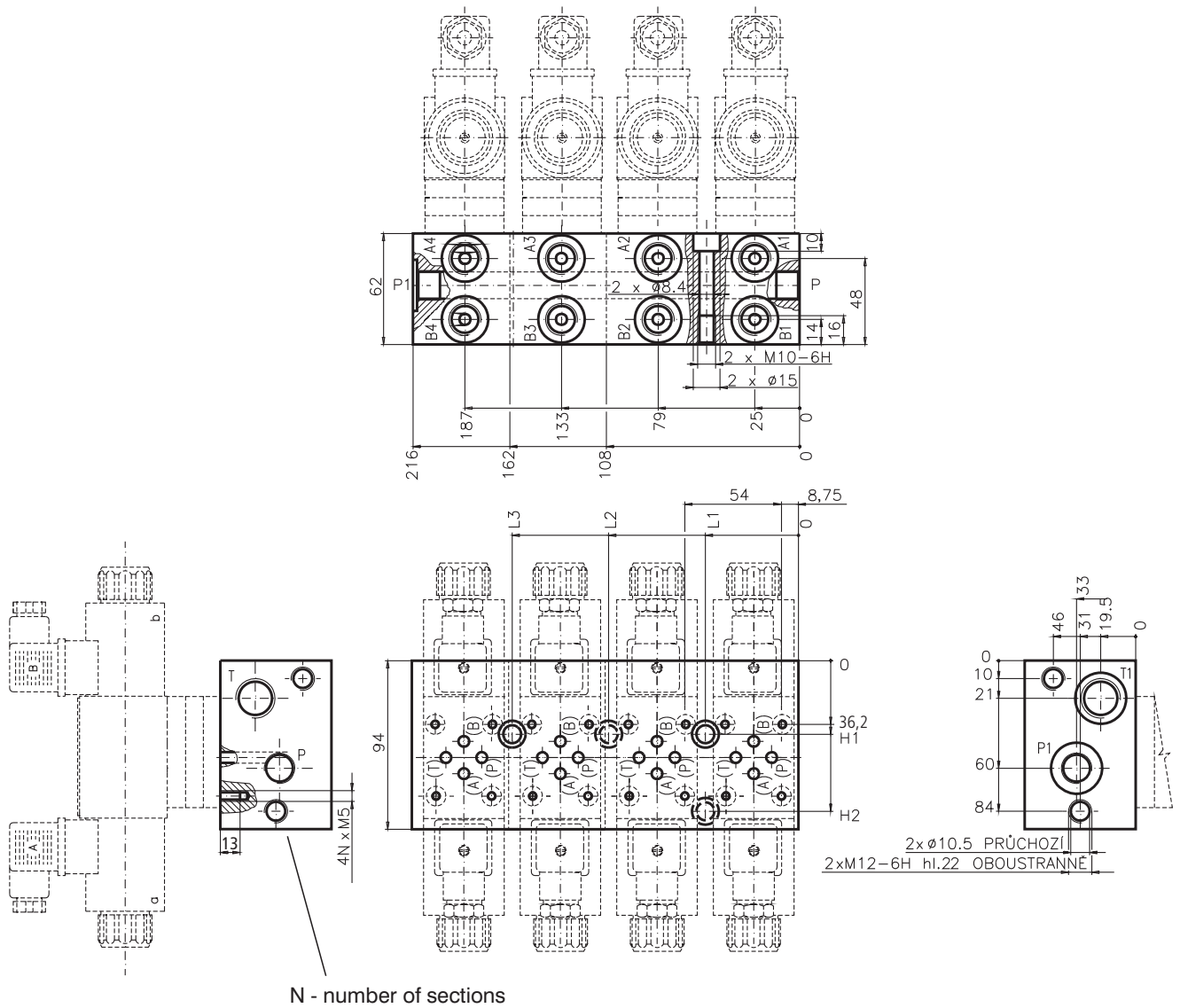
Port	A, B	P	T	P1	T1
Thread	G 3/8	G 3/8	G 1/2	G 3/8	G 1/2
Depth of threa	12	12	14	12	14
Counterbore	Ø23	-	-	Ø28,4-0,2	Ø28,4-0,2
Depth of counterbore	1	-	-	2,1-0,1	2,1-0,1
O-Ring [mm]	-	-	-	23,4 x 2,62	23,4 x 2,62

Valve Dimensions

Dimensions in inches and millimeters (in brackets)

Plates with 2 ... 4 sections

Plates with 1, 2, 3 and 4 sections enable combinations up to 10 sections



Number of section	L1	L2	L3	H1	H2
2	52	-	-	41	84
3	52	106	-	41	-
4	52	-	160	41	-

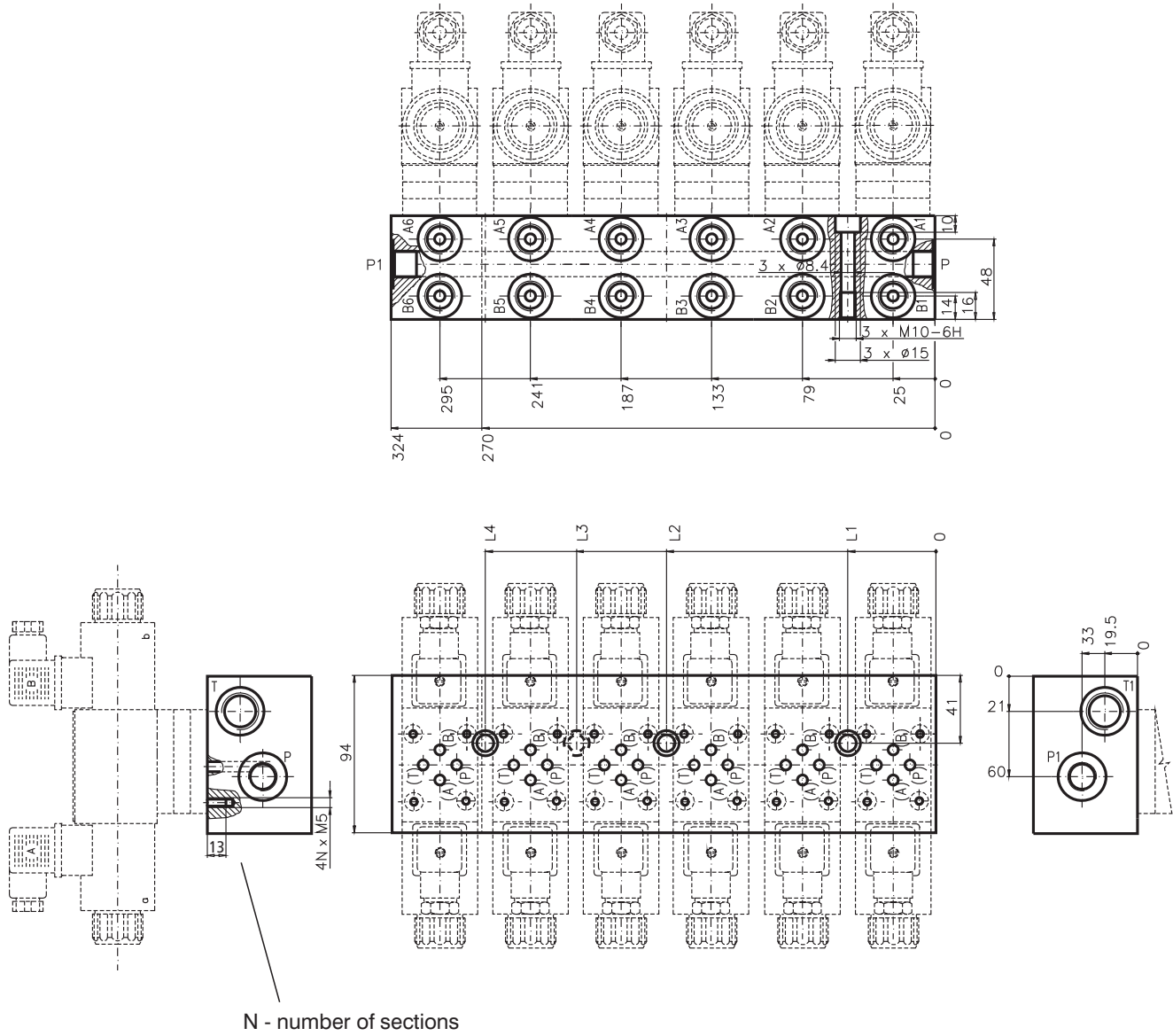
Port	A1...A4, B1...B4	P	T	P1	T1
Thread	G 3/8	G 3/8	G 1/2	G 3/8	G 1/2
Depth of thread	12	12	14	12	14
Counterbore	Ø23	-	-	Ø28,4-0,2	Ø28,4-0,2
Depth of counterbore	1	-	-	2,1-0,1	2,1-0,1
O-Ring [mm]	-	-	-	23,4 x 2,62	23,4 x 2,62

Valve Dimensions

Dimensions in inches and millimeters (in brackets)

Plates with 5 ... 6 sections

Plates with 5 and 6 do not enable any other combinations



Number of sections	L1	L2	L3	L4
5	52	160	214	-
6	52	160	-	268

Port	A1...A6, B1...B6	P, P1	T, T1
Thread	G 3/8	G 3/8	G 1/2
Depth of thread	12	12	14
Counterbore	∅23	∅23	∅28
Depth of counterbore	1	1	1

Mounting Accessories

Set of stud bolts, nuts and washers for connection of PD06 plates

Ordering Code

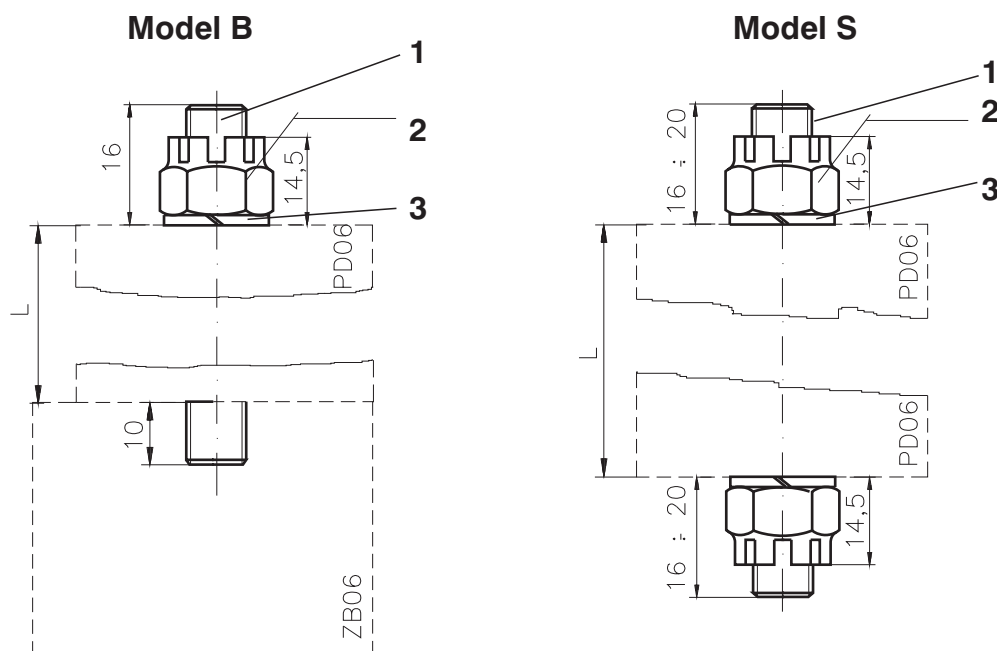
<p>Mounting accessories</p> <hr/> <p>Model</p> <ul style="list-style-type: none"> - for connection of PD plates with ZB06 block B - for separate connection of PD06 plates S 	MP	<div style="border: 1px solid black; width: 20px; height: 20px; margin: 0 auto;"></div>	-	<div style="border: 1px solid black; width: 20px; height: 20px; margin: 0 auto;"></div>	1 ... 10	Number of section
		M10				Thread

Survey of Types

Number of sections	Total block length - L - L [mm]	Model B		Model S	
		Type	Ordering number	Type	Ordering number
1	54	MPB10-1	23676000	-	-
2	108	MPB10-2	23676100	MPS10-2	23676800
3	162	MPB10-3	16103200	MPS10-3	23676900
4	216	MPB10-4	23676300	MPS10-4	23677000
5	270	MPB10-5	23676400	MPS10-5	23677100
6	324	MPB10-6	23676500	MPS10-6	23677200
7	378	MPB10-7	23676600	MPS10-7	16103300
8	432	MPB10-8	23676700	MPS10-8	16103400
9	486	-	-	MPS10-9	23677500
10	540	-	-	MPS10-10	23677600

Dimensions

Dimensions in inches and millimeters (in brackets)



- 1 Stud bolt
- 2 Nut
- 3 Washer

Caution

- The packing foil is recyclable.
- O-Ring supplied with delivery.
- The technical information regarding the product presented in this catalogue is for descriptive purposes only. It should not be construed in any case as a guaranteed representation of the product properties in the sense of the law.

ARGO-HYTOS s.r.o. CZ - 543 15 Vrchlabí
Tel.: +420-499-403 111
E-mail: info.cz@argo-hytos.com
www.argo-hytos.com