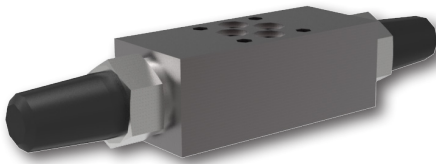


Restrictor Valve with Reverse Flow Check, Modular

VSO1-04/M

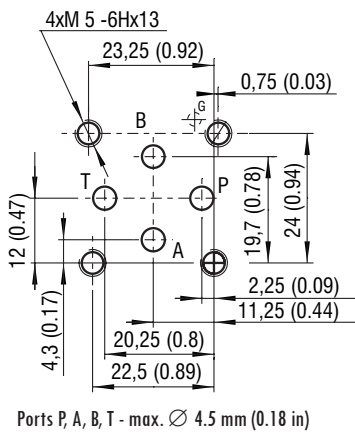
Size 04 (D02) • Q_{max} 25 l/min (7 GPM) • p_{max} 320 bar (4600 PSI)



Technical Features

- › Restrictor valve with reverse flow check, mounting interface acc. to ISO 4401, DIN 24340 (CETOP 02)
- › Meter-in or meter-out flow control
- › Leak-free closing in one or two service ports
- › Linear adjustment and positive seat overlap
- › Desired settings may be locked down
- › Optionally adjustable by allen key, with protective cap
- › In the standard version, the sandwich plate of valve is phosphated for basic surface corrosion protection and as preparation for painting. Steel parts are zinc-coated for corrosion protection 240 h in NSS acc. to ISO 9227.
- › Enhanced surface protection for mobile applications is available. The sandwich plate and steel parts are zinc-coated with corrosion protection 520 h in NSS

ISO 4401-02-01-0-05



Functional Description

Dual hydraulic flow restrictor valves with optional by-pass check valves are used to control flow rates in two separate lines (A, B) of a hydraulic circuit. The modular design provides six functional versions. The valve restricts the fluid flow in one direction while providing unobstructed reverse flow in the opposite direction. The throttling is adjusted by a set screw, which can be operated by a key. The sandwich design supports stacking with other components of the same size. Depending on the valve installation it functions as a meter-in or meter-out flow control device. The orientation of the check valve(s) in the valve body corresponds with the symbol on the nameplate.

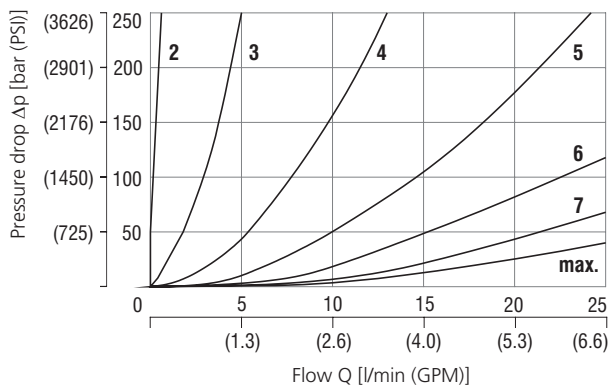
Technical Data

Valve size	04 (D02)	
Max. flow	l/min (GPM)	25 (6.6)
Max. operating pressure	bar (PSI)	320 (4640)
Fluid temperature range (NBR)	°C (°F)	-30 +100 (-22 ... +212)
Fluid temperature range (FPM)	°C (°F)	-20 +120 (-4 ... +248)
Weight	kg (lbs)	0.8 (1.76)

	Datasheet	Type
General information	GI_0060	Products and operating conditions
Mounting interface / tolerances	SMT_0019	Size 04
Spare parts	SP_8010	

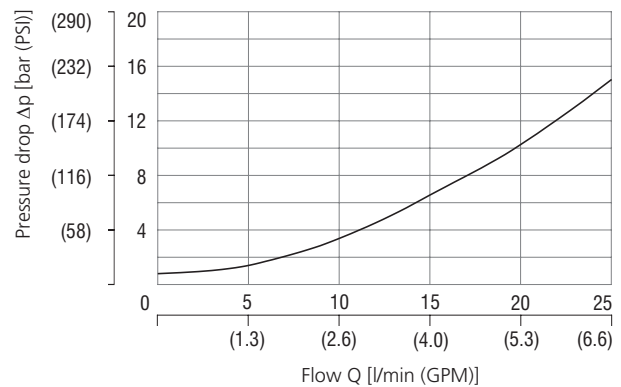
Characteristics measured at $v = 32 \text{ mm}^2/\text{s}$ (156 SUS)

Pressure drop related to flow rate



Check valve pressure drop related to flow rate

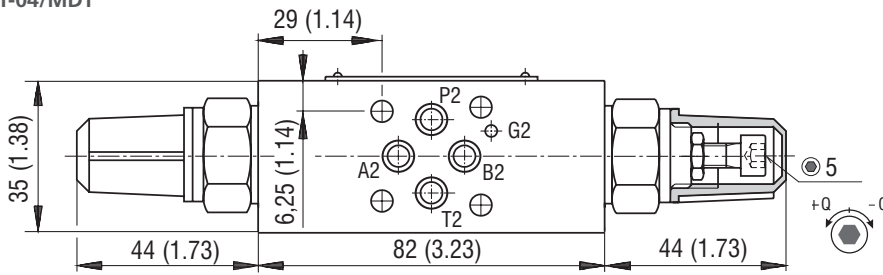
Throttle valve closed



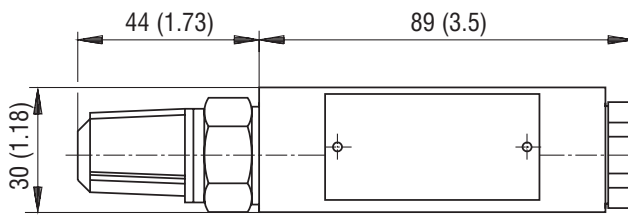
Number of turns of the adjustment screw							
2	3	4	5	6	7	max.	

Dimensions in millimeters (inches)

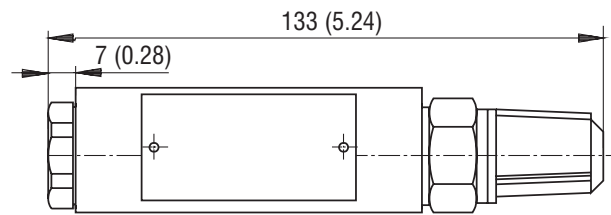
Model
VSO1-04/MCT
VSO1-04/MDT



Model
VSO1-04/MAT
VSO1-04/MET

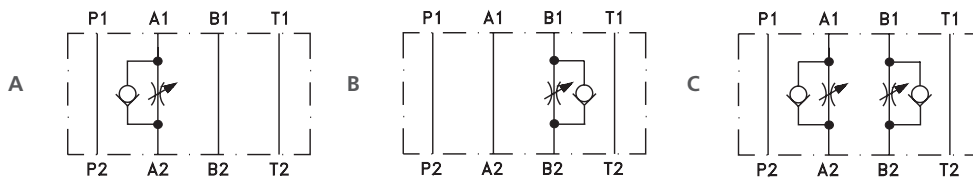


Model
VSO1-04/MBT
VSO1-04/MFT

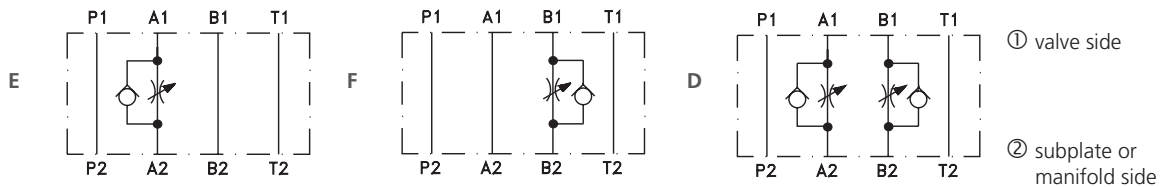


Functional Symbols

Meter-in control



Meter-out control



Notice: The orientation of the symbol on the name plate corresponds with the valve function.

Ordering Code

VSO1 - 04 / M [] [] [] - []

Restrictor valve with reverse flow check

Valve size

Modular, sandwich plate

Functional symbols

- check valve in line A, meter-in*
- check valve in line B, meter-in*
- check valve in line A and B, meter-in*
- check valve in line A, meter-out*
- check valve in line B, meter-out*
- check valve in line A and B, meter-out*

- A
- B
- C
- E
- F
- D

*see table of functional symbols

No designation

- A
- B

Surface treatment

- body phosphated, steel parts
- zinc-coated (ZnCr-3), ISO 9227 (240 h)
- zinc-coated (ZnCr-3), ISO 9227 (240 h)
- zinc-coated (ZnNi), ISO 9227 (520 h)

No designation
V

Seals
NBR
FPM (Viton)

Adjustment option
allen key (hex. 5), with protective cap