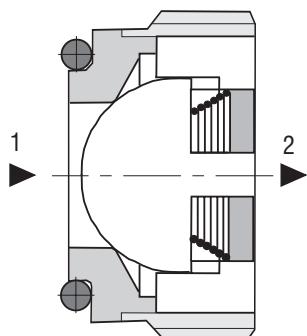


Check Valve, Ball Type

VJO1-10/S

Size 10 / M20x1.5 • Q_{max} 80 l/min (21 GPM) • p_{max} 350 bar (5100 PSI)

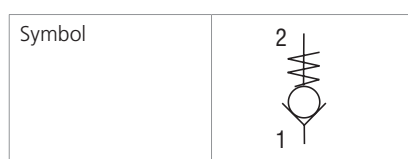


Technical Features

- › Hardened precision parts
- › Sharp-edged steel seats for dirt-tolerant performance
- › Leak-free closing, suitable for fast cycling with long life
- › Compact design for limited installation space availability
- › High flow capacity
- › In the standard version, the valve is without surface coating

Functional Description

A hydraulic check valve in the form of a screw-in cartridge-style for use as a blocking or load-holding device. The cartridge has a ball check which is closed by spring until sufficient pressure is applied at port 1 to open flow to port 2.



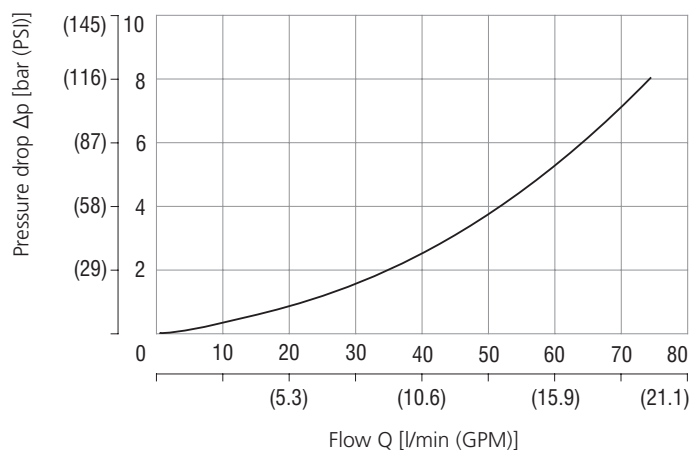
Technical Data

Valve size	10 / M20x1.5	
Max. flow	l/min (GPM)	80 (21.1)
Max. operating pressure	bar (PSI)	350 (5076)
Cracking pressure	bar (PSI)	0.5 (7.25)
Fluid temperature range (NBR)	°C (°F)	-30 +100 (-22 ... +212)
Fluid temperature range (FPM)	°C (°F)	-20 +120 (-4 ... +248)
Mass	kg (lbs)	0.017 (0.038)

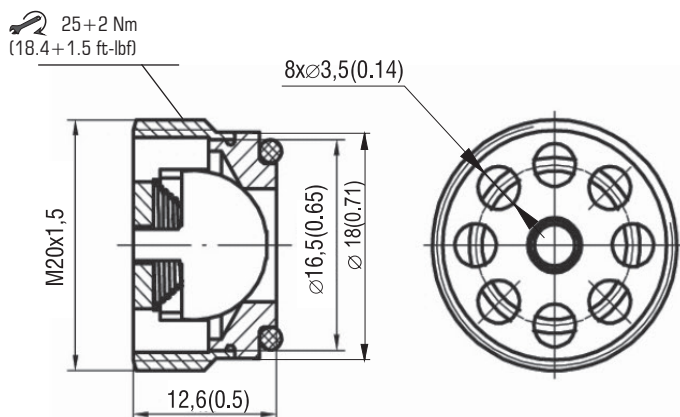
	Datasheet	Type
General information	GI_0060	Products and operating conditions
Spare parts	SP_8010	

Characteristics measured at $v = 32 \text{ mm}^2/\text{s}$ (156 SUS)

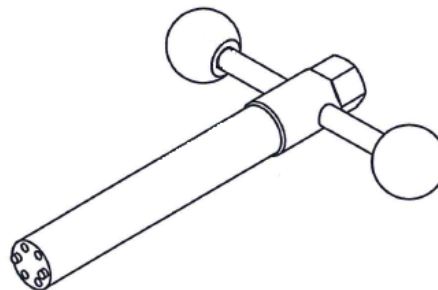
Pressure drop related to flow rate



Dimensions in millimeters (inches)

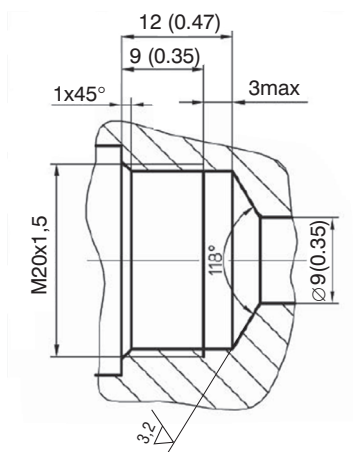


Tool for screwing the valve VJO1-10 into cavity



Please see Spare Parts datasheet (8010) for SAP number.

Cavity in millimeters (inches)



Ordering Code

