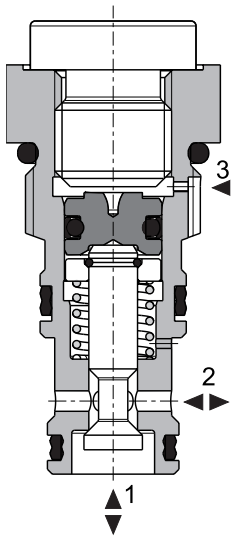


Check Valve, Poppet-type, Pilot to Open

SC5H-I3/S

M18x1,5 • Q_{max} 30 l/min (8 GPM) • p_{max} 350 bar (5100 PSI)

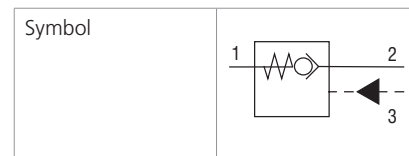


Technical Features

- › Hardened and precision working parts
- › Sharp-edged ground steel seats for dirt-tolerant performance
- › Leak-free closing and suitable for fast cycling with long life
- › High flow capacity
- › Optional sealed piston and bias spring ranges for back-pressure control
- › In the standard version, the valve is zinc-coated for 240 h protection acc. to ISO 9227. Enhanced surface protection for mobile sector available for the steel parts (ISO 9227, 520 h salt spray)

Functional Description

The valve allows flow to pass from port 2 to 1 while normally closing flow from 1 to 2 with load. When pressure is applied at port 3. The flow passes from port 1 to 2. The cartridge valve has a 4:1 pilot ratio. This require minimum one-third of the load pressure applied at port 3 to open the valve. The check valve is also spring closed to secure holding position in static conditions without the load.



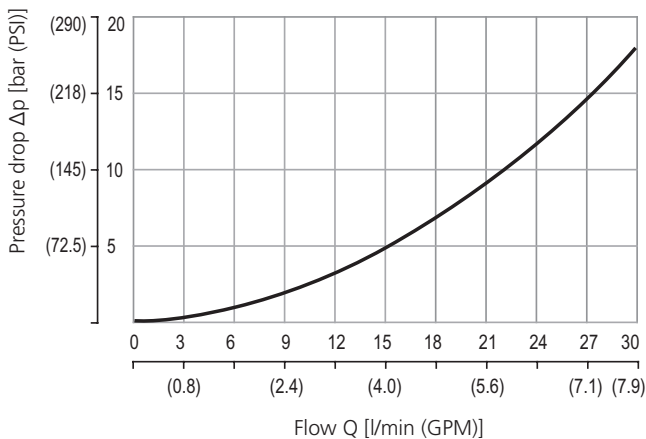
Technical Data

Valve size / Cartridge cavity		M18x1,5 / I3
Max. flow	l/min (GPM)	30 (7.9)
Max. operating pressure	bar (PSI)	350 (5080)
Pilot ratio		4:1
Fluid temperature range (NBR)	°C (°F)	-30 ... +100 (-22 ... +212)
Fluid temperature range (FPM)	°C (°F)	-20 ... +120 (-4 ... +248)
Weight	kg (lbs)	0,65 (1.43)

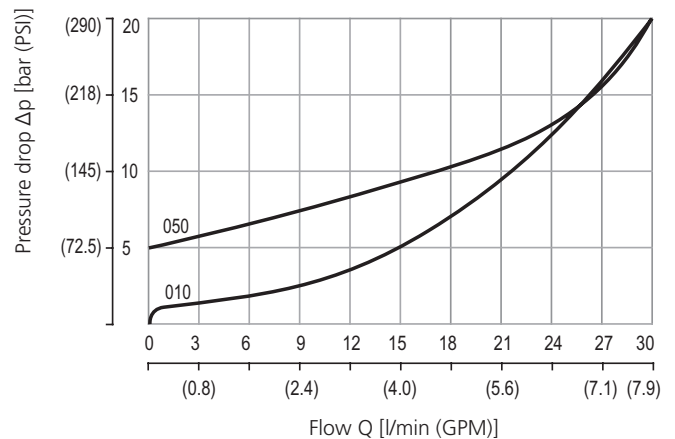
	Datasheet	Type
General information	GI_0060	Products and operating conditions
Cavity details	SMT_0019	SMT-I3*
Spare parts	SP_8010	

Characteristics measured at $v = 40 \text{ mm}^2/\text{s}$ (195 SUS)

Pressure drop related to flow rate

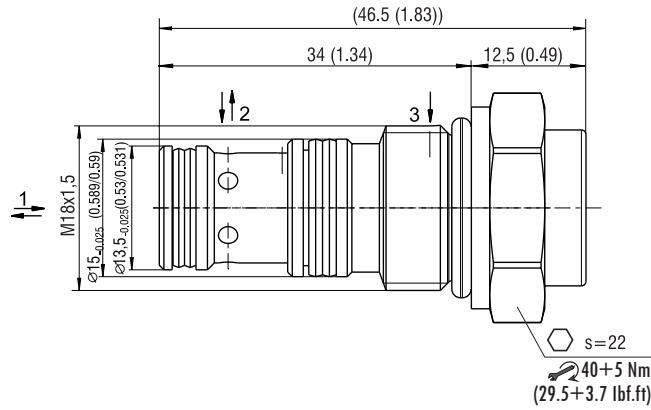


pilot open (1→2)



free flow (2→1)

Dimensions in millimeters (inches)



Ordering Code

SC5H - I3 / S 4 [] - [] [] - []

Check valve, poppet-type,
pilot to open

Valve cavity
M18x1,5

Model
screw in cartridge

Pilot ratio
standard

4:1

Optional pilot piston seal
without pilot piston seal
with pilot piston seal

No designation
S

Surface treatment
A zinc-coated (ZnCr-3), ISO 9227 (240 h)
B zinc-coated (ZnNi), ISO 9227 (520 h)

No designation
V

Seals
NBR
FPM (Viton)

Free flow cracking pressure
010 1 bar (14.5 PSI)
050 5 bar (72.5 PSI)