

## Oil Service Units for Wide Viscosity Ranges

### FA1HV 008 / 016

Easy filling and cleaning · Compact design · Comfortable handling



Oil Service Unit FA1HV

#### Description

##### FA1HV – quick, simple and compact

With the Oil Service Unit FA1HV, hydraulic and lubricating systems can be easily filled or cleaned.

##### Extended viscosity range

The unit is designed to operate with a wide viscosity range. This allows, for example, the filtration of transmission fluids and high viscosity oils even at low temperatures.

##### Protection of components through ultra-fine filtration

The high separation efficiency of EXAPOR®MAX ultra-fine filter elements guarantees excellent cleanliness levels and therefore highest protection of components. An excellent dirt holding capacity allows economic operation of the system.

#### Characteristics

##### Nominal flow rate

FA1HV 008: 8 l/min / 2.11 gpm  
FA1HV 016: 16 l/min / 4.23 gpm

##### Viscosity range (continuous operation)

FA1HV 008 15 up to 2400 mm²/s / 70 up to 11100 SUS  
FA1HV 016 15 up to 1200 mm²/s / 70 up to 5560 SUS

##### Operating pressure

Max. 5 bar / 73 psi

##### Hydraulic fluids

Mineral oils and biodegradable fluids (HEES and HETG).  
Other fluids on request.

##### Temperature range of fluids

0 °C ... +65 °C / +32 °F ... +149 °F (also see viscosity range)

##### Ambient temperature range

0 °C ... +50 °C / +32 °F ... +122 °F

##### Maximum suction height

1.5 m / 4.9 ft

##### Filter clogging indicator

Optical, differential pressure switch DG 042-01

##### Operating position

Vertical, motor at the bottom

##### Weight

approx. 20 kg / 44.1 lbs



### Compact design

The compact design allows easy access to the oil tank.  
The FA1HV comes ready to connect, with hose packages.



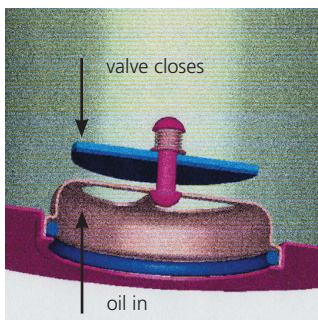
### Mobile transport aid / trolley

For easy transport of the filter unit FA1HV 016, it is possible to hook a transport trolley onto the standing device. This allows effortless transport even over long distances. The transport trolley must be ordered separately - see accessories section.



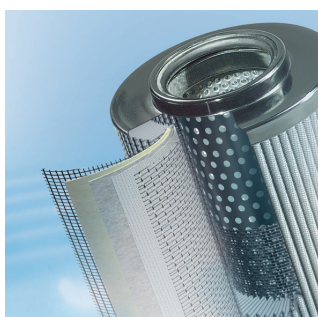
### User-friendly filter element change

The filter element can be removed from the housing together with the cover. The dirt retention valve ensures that solid particle sediment is completely removed with the filter element.



### Maintenance-free filter housing due to a clever filter element technique

Fluid flows through the element from the inside to the outside. The built-in dirt retention valve closes automatically when the element is removed, ensuring that all dirt is removed from the housing with the element.



### Quality in detail

The EXAPOR®MAX fine element is the heart of the FA1HV. High cleanliness levels protect the hydraulic system against contamination during the oil filling process.

## Ordering code

FA1HV








/

Type of unit	Code
Oil service unit for wide viscosity ranges	FA1HV

Nominal flow rate*	Code
8 l/min / 2.11 gpm	008
16 l/min / 4.23 gpm	016

Filter element				Code	
		Fineness ( $\beta=200$ ) Dirt-holding capacity according to ISO 16889 / water capacity		Code of spare filter element	
		FA1HV 008	FA1HV 016		
EXAPOR®MAX 2	3 $\mu$ m	490 g	280 g	V7.1220-113	V003
EXAPOR®MAX 2	5 $\mu$ m	460 g	270 g	V7.1220-13	V005
EXAPOR®MAX 3	10 $\mu$ m	340 g	190 g	V7.1220-06	V010
EXAPOR®AQUA	7 $\mu$ m	145 g / 320 ml	85 g / 190 ml	Y7.1220-05	Y007
EXAPOR®AQUA	3 $\mu$ m	165 g / 340 ml	105 g / 205 ml	Y7.1220-113	Y003

Electric motor*				Code	
(other motor on request)					
Phase(s), voltage	Frequency	Power FNA1HV 008 / 016	Electric plug		
1~230 VAC	50/60 Hz	0.37 / 0.55 kW	1	23050	
3~400/460 VAC	50/60 Hz	0.37 / 0.55 kW	2	40050	

Electric plug - code and description below *						
Other types - on request						
No code Default for code 23050	G	J	No code Default for code 11050	I6	I4	No code Default for code 40050
220-250 VAC	220-250 VAC	220-240 VAC	100-127 VAC	200-250 VAC INDUSTRIAL	110-130 VAC INDUSTRIAL	380-480 VAC INDUSTRIAL
15 A TYPE E/F (CEE7/7 Unischuko)	13 A TYPE G (BS 1363)	10 A TYPE J (T12)	15 A TYPE B (NEMA 5-15P)	Type 013-6 16A-6h 3-pins (2P+PE)	Type 013-4 16A-4h 3-pins (2P+PE)	Type 715-6 16A-6h 5-pins (3P+N+PE), IEC 60309 With phase crossover
						

Optional pressure hose extension **	
Customized length of the pressure hose (maximum 5 m / 16.4 ft) Example of order <b>P4.5</b> - pressure hose length 4.5 m / 14.8 ft	Px.x

Optional electric cable extension ***	
Customized length of the electric cable Example of order <b>C8.5</b> - electric cable length 8.5 m / 27.8 ft equipped with electric plug	Cx.x

\* Indications at 50 Hz. At 60 Hz the value increases by approx. 20%

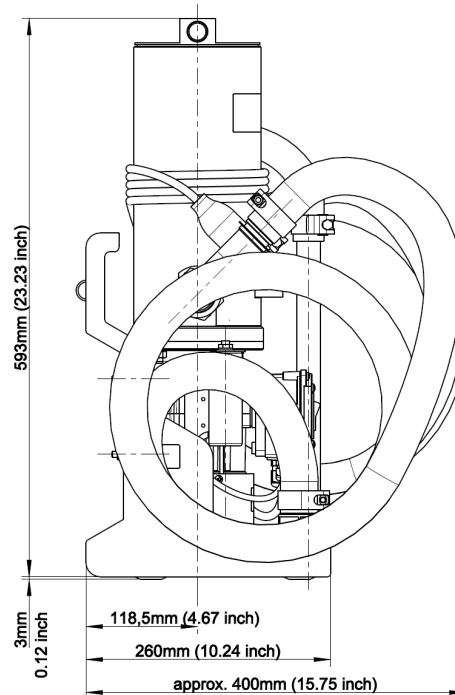
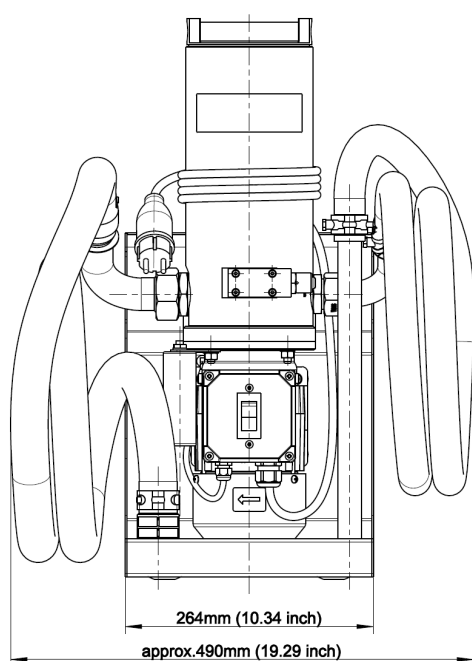
\*\* As standard, the unit is equipped with the following hoses

**Suction hose:** DN 32, length 1.5 m / 4.9 ft with suction strainer 600  $\mu$ m (installed at the free end of the hose)

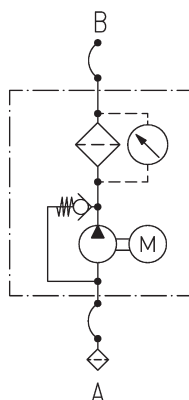
**Pressure hose:** DN 25, length 2.0 m / 6.6 ft with aluminum lance length 25 cm / 9.8 inch (installed at the free end of the hose)

\*\*\* As standard, the unit is equipped with an electric cable, length 2.5 m / 8.2 ft.

## Dimensions

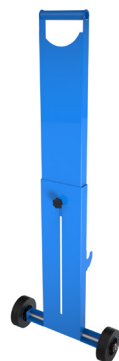


## Hydraulic symbol



## Accessories

Trolley for easy transportation, order code: **FA-T**



FA-T trolley



FA-T trolley attached to the filter unit