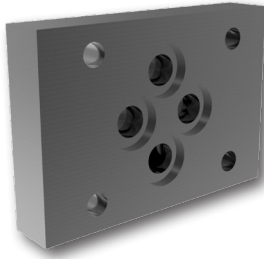


DK1-04 (06, 10)

Size 04, 06, 10 (D02, D03, D05) • p_{max} 320 bar (4700 PSI)



Technical Features

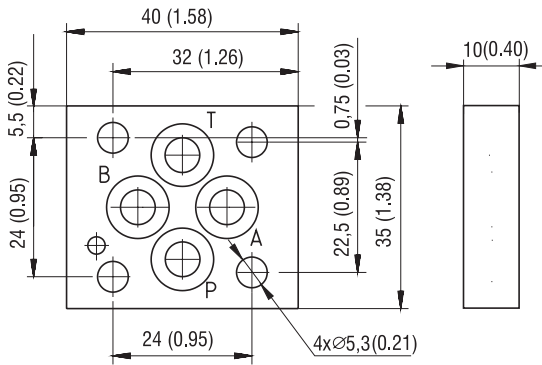
- › Mounting interface acc. to ISO 4401, DIN 24340 (CETOP 02, 03, 05)
- › Wide range of hydraulic connections
- › NBR and Viton seals
- › Enhanced surface protection for mobile sector up to 520 h salt spray acc. to ISO 9227

Functional Symbols

DK1-04(06)/32-1	DK1-04(06)/32-2	DK1-04(06)/32-3	DK1-04(06)/32-4	DK1-04(06)/32-5	DK1-04(06)/32-6
DK1-04(06)/32-7	DK1-04(06)/32-8	DK1-04(06)/32-9	DK1-04(06)/32-10	DK1-04(06)/32-11	DK1-10/32-2

Dimensions in millimeters (inches)

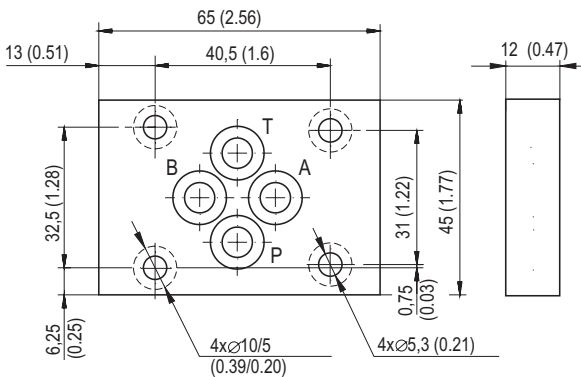
DK1-04/32*



Sealing rings NBR / FPM (Viton)	Weight plates [kg (lbs)]
4 pcs. square rings 7.65x1.68 NBR70	0.10 (0.22)
4 pcs. square rings 7.5x1.8 V75	

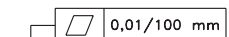
Sealing rings are delivered with each plate (quantity and dimensions see the table above).

DK1-06/32*



Sealing rings NBR / FPM (Viton)	Weight plates [kg (lbs)]
4 pcs. square rings 9.25x1.68 NBR70	0.32 (0.71)
4 pcs. square rings 9.25x1.78 V90	

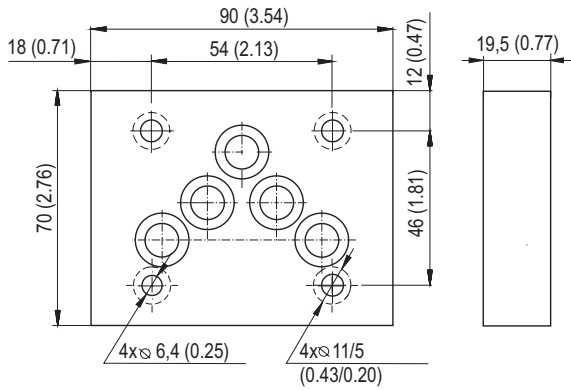
Sealing rings are delivered with each plate (quantity and dimensions see the table above).



0,8 (Rmax. 6,3) Required surface quality of the counterpart

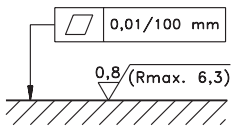
Dimensions in millimeters (inches)

DK1-10/32*



Sealing rings NBR / FPM (Viton)	Weight plates [kg (lbs)]
5 pcs. square rings 12.42x1.68 NBR70	1.00 (2.20)
5 pcs. square rings 12.42x1.68 V90	

Sealing rings are delivered with each plate (quantity and dimensions see the table above).



Required surface quality of the counterpart

Ordering Code

DK1 - [] /32- [] [] - B

Blanking plates for ISO 4401 modular valves

Size, mounting interface acc. to

ISO 4401-02-01-0-05, DIN 24340 (CETOP 02)	04
ISO 4401-03-02-0-05, DIN 24340 (CETOP 03)	06
ISO 4401-05-04-0-05, DIN 24340 (CETOP 05)	10

Surface treatment
zinc-coated (ZnNi), ISO 9227 (520 h)

Functional symbol, port connections

A - B / P, T closed*	1
All ports closed	2
P - A / B, T closed*	3
P - A / B - T *	4
P - B / A, T closed*	5
P - B / A - T *	6
P - T / A, B closed*	7
A - B - T / P closed*	8
P - A - B / T closed*	9
A - T / P, B closed*	10
B - T / P, A closed*	11

N
V

Seals
NBR
FPM (Viton)

* only available for Sizes 04 / 06