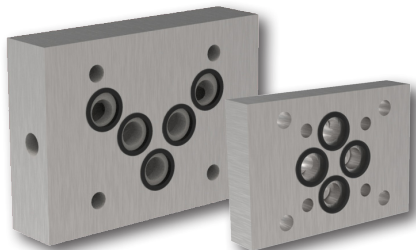


Adaptor Plate

DA-06/04, 10/06

Size 06/04, 10/06 (D03/D02, D05/D03) • p_{max} 350 bar (5800 PSI)

Technical Features

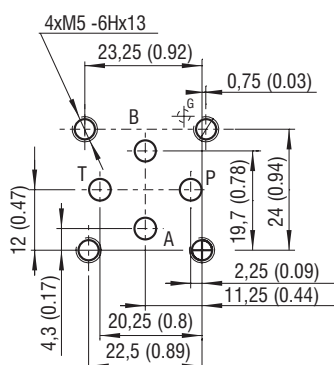


- › Adaptor plates Size 06 / Size 04 and Size 10 / Size 06 (manifold side / valve side)
- › NBR or Viton seal rings
- › Steel plates are zinc-coated for 240 h protection in NSS acc. to ISO 9227
- › Two types of adaptor plates Size 10 / Size 06
 - low cost type interchanges the channels A and B each other (Model No. 2)
 - standard type preserves the A-A and B-B connection (Model No. 3)

Modular valves mounting surface		06/04 (D03/D02)	10/06 (D05/D03)
Max. operating pressure	bar (PSI)	350 (5800)	
	Data Sheet	Type	
General information	GI_0060	Products and operating conditions	
Mounting interface	SMT_0019	Size 04, Size 06, Size 10	
Studs and nuts for vertical stacking assemblies	D02,D03,D05_0020		

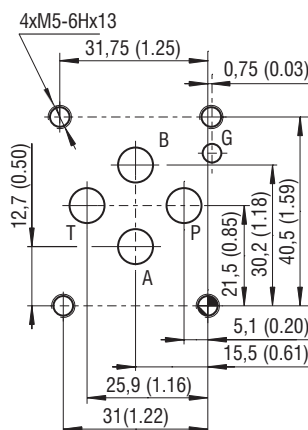
Mounting Interface ISO 4401

ISO 4401-02-01-0-05



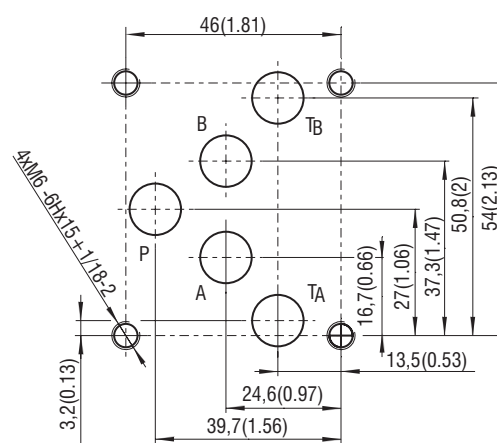
Ports P, A, B, T - max. \varnothing 4.5 mm (0.18 in)

ISO 4401-03-02-0-05



Ports P, A, B, T - max. \varnothing 7.5 mm (0.29 in)

ISO 4401-05-04-0-05



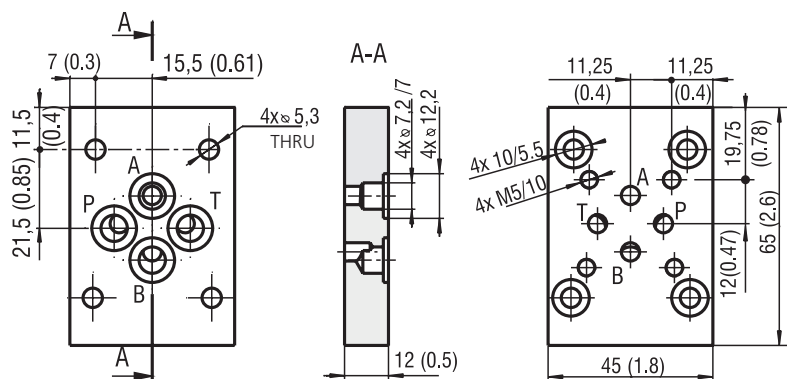
Ports P, A, B, T - max. \varnothing 11.2 mm (0.44 in)

Functional Symbols Available Model

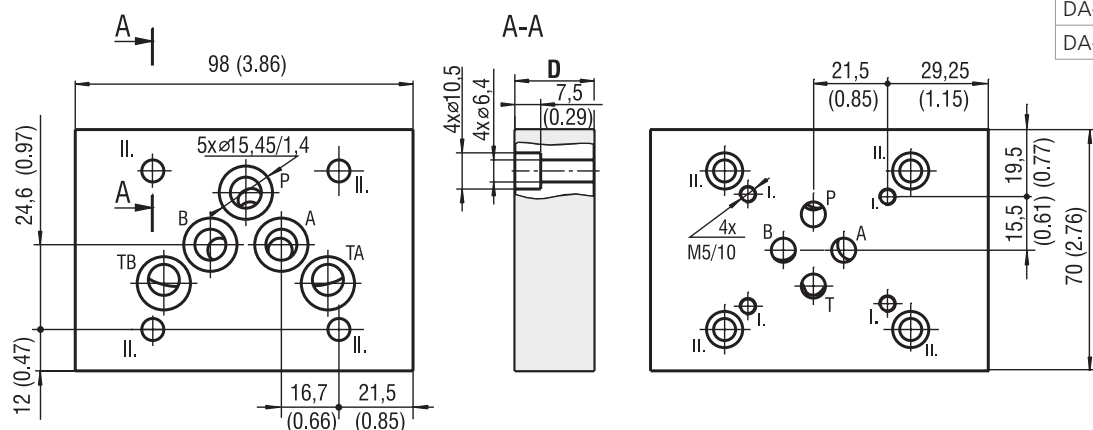
Adaptor plate size	06/04	10/06	10/06
Model No.	1	2	3
Size 04			
Size 06			

Dimensions in millimeters (inches)

DA-06/04-35-1-ST*



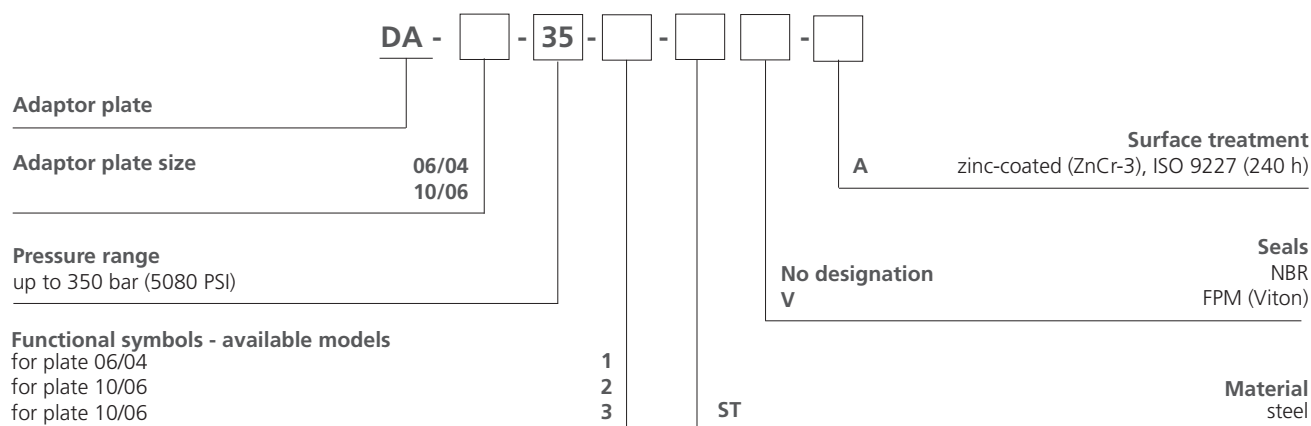
DA-10/06-35-2-ST*
DA-10/06-35-3-ST*



Ordering code	Dimension
	D mm (in)
DA-10/06-35-2-ST*	23 (0.91)
DA-10/06-35-3-ST*	46 (1.81)

Model	Ordering code	SAP No.	Weight kg (lbs)	Fixing screws	Pcs	SAP No.
1	DA-06/04-35-1-ST-A	16109000	0.24 (0.53)	M5x16	4	17060700
	DA-06/04-35-1-STV-A	41146500				
2	DA-10/06-35-2-ST-A	24601600	1.13 (2.49)	M6x25	4	20238400
	DA-10/06-35-2-STV-A	41143900				
3	DA-10/06-35-3-ST-A	41146700	2.30 (5.07)	M6x50	4	20239200
	DA-10/06-35-3-STV-A	41146600				

Ordering Code



See Functional symbols, page 1